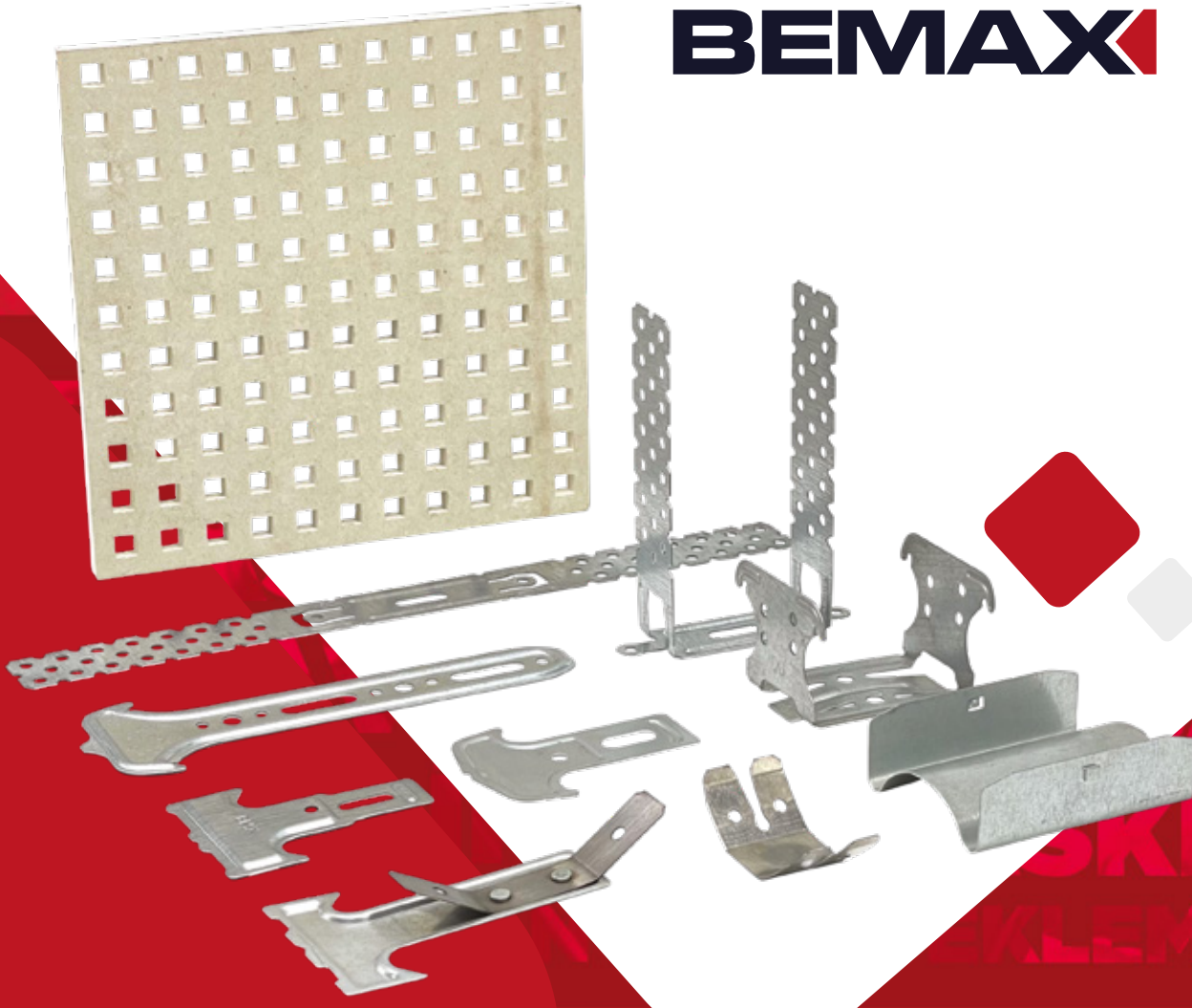


**BEMAX**



**METAL CONNECTING  
EQUIPMENTS**

**BEMAX** 

# BEMAX

Bemax Metal, based in Ankara, is Metal working and manufacturing company which products connecting equipments for plasterboard systems. From 30 years of experiences about engineering and machine manufacturing, it has produced a lot of new generation metallic elements for plasterboard system's montage. Bemax Metal is involved in producing metallic connecting equipments for plasterboard systems.

## **Our Mission**

To satisfy the customer's high expectations by providing top quality - stability of price.

## **Our Vision**

To be a brand which is creative, quality and to creat different products and also to meet all customer's needs, expectations in the whole world as well as Türkiye.

# CONTENTS

**Suspended Ceiling T Clip** 06

---

**Suspended Ceiling Bracket** 07

---

**Extension Piece** 08

---

**Double Spring Clip** 09

---

**Hanger Tongs** 10

---

**Double clip** 11

---

**Hanger Wire (Loop)** 12

---

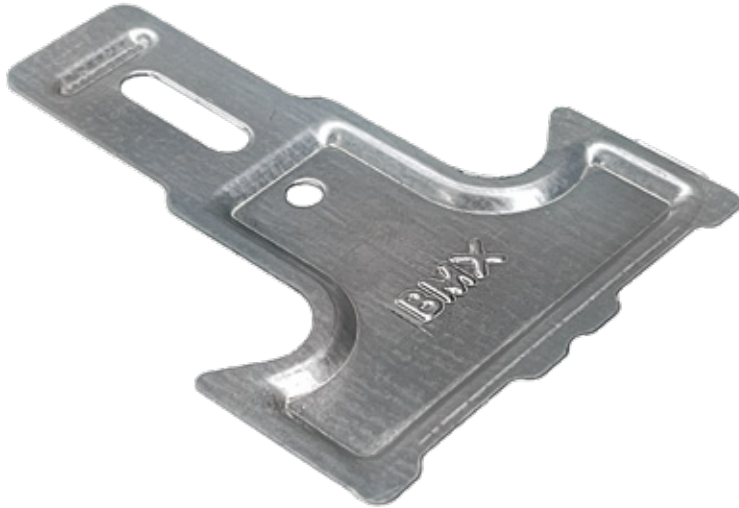
**Hanger Wire (Hook)** 13

---

# Suspended Ceiling T Clip

Cheap price, easy and practical usage for plasterboard montage  
**Suspended Ceiling T Clip**

## MONTAGE STRUCTURE PROFILE FACTORS



Suspended ceiling T clips are produced by cold forming method to warming method and galvanized coating from carbon steel sheet which its thickness is 0,08 mm for preventing rustiness.



**Easy Montage**



**Reasonable Price**



**High Quality Product**

## Qualities

CODE OF PRODUCT	USAGE AREAS	THICKNESS	PACKING
<b>BMX-01-01</b>	Wall cladding system CD60 is used for the montage of plasterboard' s profile.	0,50 mm-1 mm	1000 Items
Optional Qualities	Logo	Hole Size	Slot Size

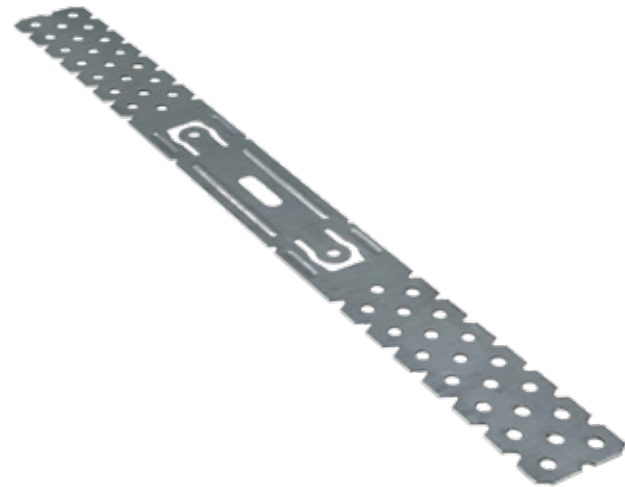
# Suspended Ceiling Bracket

Cheap price, easy and practical usage for plasterboard montage  
**Suspended Ceiling Bracket**

## MONTAGE STRUCTURE PROFILE FACTORS



Brackets is used by setting of wall cladding system. This process enables to take stretching of wall and to increase endurance.



**Easy Montage**



**Reasonable Price**



**High Quality Product**

## Qualities

CODE OF PRODUCT	ACCESSORY SIZE	USAGE AREAS	THICKNESS	PACKING
BMX-02-01	75 mm	Suspended ceiling system wall cladding system	0,5 mm - 1 mm	200 Items
BMX-02-02	100 mm	Suspended ceiling system wall cladding system	0,5 mm - 1 mm	200 Items
BMX-02-03	125 mm	Suspended ceiling system wall cladding system	0,5 mm - 1 mm	200 Items
BMX-02-04	150 mm	Suspended ceiling system wall cladding system	0,5 mm - 1 mm	200 Items
BMX-02-05	175 mm	Suspended ceiling system wall cladding system	0,5 mm - 1 mm	200 Items
BMX-02-06	200 mm	Suspended ceiling system wall cladding system	0,5 mm - 1 mm	200 Items
BMX-02-07	250 mm	Suspended ceiling system wall cladding system	0,5 mm - 1 mm	200 Items
BMX-02-08	300 mm	Suspended ceiling system wall cladding system	0,5 mm - 1 mm	200 Items
BMX-02-09	350 mm	Suspended ceiling system wall cladding system	0,5 mm - 1 mm	200 Items
BMX-02-10	400 mm	Suspended ceiling system wall cladding system	0,5 mm - 1 mm	200 Items
BMX-02-11	500 mm	Suspended ceiling system wall cladding system	0,5 mm - 1 mm	200 Items
BMX-02-12	600 mm	Suspended ceiling system wall cladding system	0,5 mm - 1 mm	200 Items
BMX-02-13	700 mm	Suspended ceiling system wall cladding system	0,5 mm - 1 mm	200 Items
BMX-02-14	800 mm	Suspended ceiling system wall cladding system	0,5 mm - 1 mm	200 Items

Optional Qualities

Logo

Hole Size

Slot Size

# Extension Piece

Cheap price, easy and practical usage for plasterboard montage  
**Extension Piece**

## MONTAGE STRUCTURE PROFILE FACTORS

Extension piece is the name of a thing which is beneficial to attach metallic profiles in case main profile technic's length goes up 3 meters in plasterboard process.



✓ Easy Montage

✓ Reasonable Price

✓ High Quality Product

## Qualities

CODE OF PRODUCT	USAGE AREAS	THICKNESS	PACKING
<b>BMX-03-01</b>	Suspended ceiling systems and cutaway connector, which cause to expand the half grid, are used to stick two CD60 plasterboard profile systems	0,4 mm-0,5 mm	200 Items

Optional Qualities	Logo	Hole Size	Slot Size
--------------------	------	-----------	-----------

# Double Spring Clip

Cheap price, easy and practical usage for plasterboard montage  
**Double Spring Clip**

## MONTAGE STRUCTURE PROFILE FACTORS

In Suspended ceiling system, double spring clip is an accessory (at the same time a clip-in profile accessory) which provides to attach two Hanger wires and to set ceiling height.



✓ Easy Montage

✓ Reasonable Price

✓ High Quality Product

## Özellikler

CODE OF PRODUCT	USAGE AREAS	THICKNESS	PACKING
<b>BMX-04-01</b>	Suspended ceiling systems are used to attach two Hanger wires.	0,40 mm-0,60 mm	200 Items

Optional Qualities	Logo	Hole Size	Slot Size
--------------------	------	-----------	-----------



# Hanger Tongs

Cheap price, easy and practical usage for plasterboard montage  
**Hanger Tongs**

## MONTAGE STRUCTURE PROFILE FACTORS

Hanger tong has lamellose property. It is beneficial to attach Hanger wires. Hanger wires are taken from holes of springs on ceiling.



✓ Easy Montage

✓ Reasonable Price

✓ High Quality Product

## Qualities

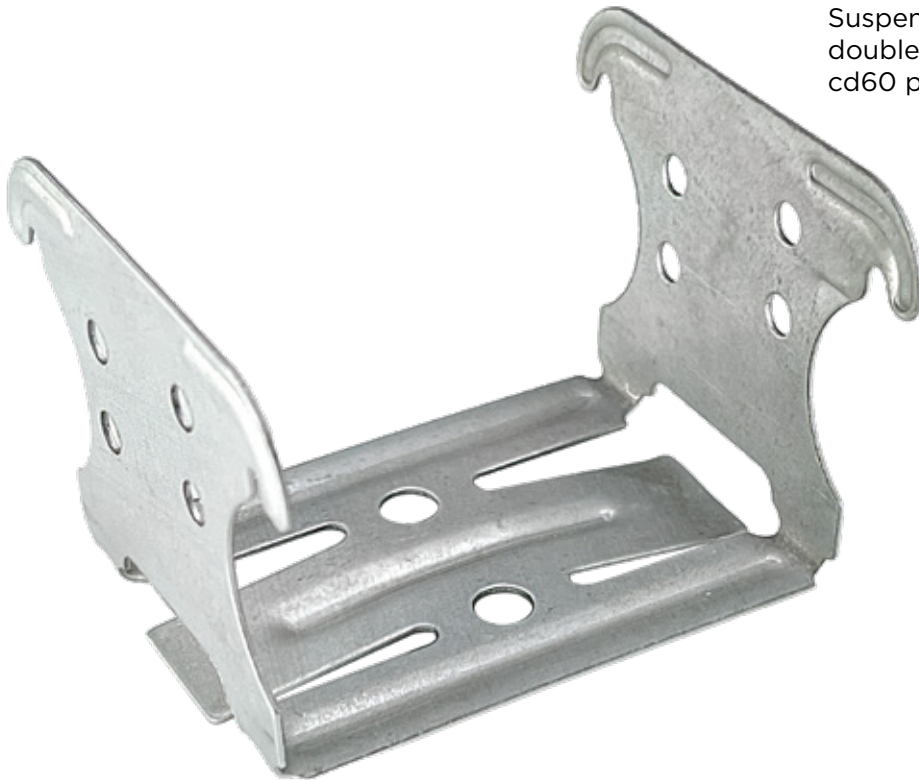
CODE OF PRODUCT	USAGE AREAS	THICKNESS	PACKING
<b>BMX-05-01</b>	Suspended ceiling system is used for fast montage of Cd60 plasterboard profiles to building's ceiling construction.	0,50 mm-1 mm	200 Items

Optional Qualities	Logo	Hole Size	Slot Size
--------------------	------	-----------	-----------

Cheap price, easy and practical usage for plasterboard montage  
**Double Clip**

## MONTAGE STRUCTURE PROFILE FACTORS

Montage structure profile factors  
 Suspended ceiling system is used to set up double crossbearer which is composed by steel cd60 plasterboard profiles. It is highly preferred.



✓ Easy Montage

✓ Reasonable Price

✓ High Quality Product

## Qualities

CODE OF PRODUCT	USAGE AREAS	THICKNESS	PACKING
<b>BMX-06-01</b>	Suspended ceiling system is used to set up double crossbearer, which is composed by steel CD60 plasterboard profiles.	0,50 mm-0,90 mm	100 Items

Optional Qualities	Logo	Hole Size	Slot Size
--------------------	------	-----------	-----------

# Hanger Wire (Loop)

Cheap price, easy and practical usage for plasterboard montage  
**Hanger Wire (Loop)**

## MONTAGE STRUCTURE PROFILE FACTORS



It is an equipment which designates how Suspended ceiling area must be low from the porter ceiling. This equipment is attached by Hanger tongs to plasterboard profiles and also this equipment is attached by anchor to ceiling.

✓ Easy Montage

✓ Reasonable Price

✓ High Quality Product

## Qualities

CODE OF PRODUCT	ACCESSORY SIZE	USAGE AREAS	THICKNESS	PACKING
BMX-07-01	30 cm	It is used for hanging of Suspended ceiling profile structures to solid construction.	2,5mm-4mm	100 Items
BMX-07-02	40 cm	It is used for hanging of Suspended ceiling profile structures to solid construction.	2,5mm-4mm	100 Items
BMX-07-03	50 cm	It is used for hanging of Suspended ceiling profile structures to solid construction.	2,5mm-4mm	100 Items
BMX-07-04	60 cm	It is used for hanging of Suspended ceiling profile structures to solid construction.	2,5mm-4mm	100 Items
BMX-07-05	80 cm	It is used for hanging of Suspended ceiling profile structures to solid construction.	2,5mm-4mm	100 Items
BMX-07-06	100 cm	It is used for hanging of Suspended ceiling profile structures to solid construction.	2,5mm-4mm	100 Items
BMX-07-07	120 cm	It is used for hanging of Suspended ceiling profile structures to solid construction.	2,5mm-4mm	100 Items
BMX-07-08	150 cm	It is used for hanging of Suspended ceiling profile structures to solid construction.	2,5mm-4mm	100 Items
BMX-07-09	200 cm	It is used for hanging of Suspended ceiling profile structures to solid construction.	2,5mm-4mm	100 Items
BMX-07-10	400 cm	It is used for hanging of Suspended ceiling profile structures to solid construction.	2,5mm-4mm	100 Items

Optional Qualities	Logo	Hole Size	Slot Size
--------------------	------	-----------	-----------

# Hanger Wire (Hook)

Cheap price, easy and practical usage for plasterboard montage  
**Hanger Wire (Hook)**

## MONTAGE STRUCTURE PROFILE FACTORS



It is an equipment which designates how Suspended ceiling area must be low from the porter ceiling. This equipment is attached by hanger tongs to plasterboard profiles and also this equipment is attached by anchor to ceiling.

- ✓ Easy Montage
- ✓ Reasonable Price
- ✓ High Quality Product

## Qualities

CODE OF PRODUCT	ACCESSORY SIZE	USAGE AREAS	THICKNESS	PACKING
BMX-08-01	30 cm	It is used for hanging of Suspended ceiling profile structures to solid construction.	2,5mm-4mm	100 Items
BMX-08-02	40 cm	It is used for hanging of Suspended ceiling profile structures to solid construction.	2,5mm-4mm	100 Items
BMX-08-03	50 cm	It is used for hanging of Suspended ceiling profile structures to solid construction.	2,5mm-4mm	100 Items
BMX-08-04	60 cm	It is used for hanging of Suspended ceiling profile structures to solid construction.	2,5mm-4mm	100 Items
BMX-08-05	80 cm	It is used for hanging of Suspended ceiling profile structures to solid construction.	2,5mm-4mm	100 Items
BMX-08-06	100 cm	It is used for hanging of Suspended ceiling profile structures to solid construction.	2,5mm-4mm	100 Items
BMX-08-07	120 cm	It is used for hanging of Suspended ceiling profile structures to solid construction.	2,5mm-4mm	100 Items
BMX-08-08	150 cm	It is used for hanging of Suspended ceiling profile structures to solid construction.	2,5mm-4mm	100 Items
BMX-08-09	200 cm	It is used for hanging of Suspended ceiling profile structures to solid construction.	2,5mm-4mm	100 Items
BMX-08-10	400 cm	It is used for hanging of Suspended ceiling profile structures to solid construction.	2,5mm-4mm	100 Items

Optional Qualities	Logo	Hole Size	Slot Size
--------------------	------	-----------	-----------



ASKI TEKLİ YAY  
ASKI MAŞASI  
ASKI TEKLİ HAL-KALI  
EKLEME PARÇASI  
ASMA TAVAN AĞRAZ  
T CLİP  
TAYAN  
ASMA

## BEMAX

### Adress

**Bemax Metal İnşaat İmalat Sanayi ve Ticaret A.Ş.**  
Saray Mah. 1500 Cad. No:18/E  
Kahramankazan ANKARA / TÜRKİYE

### E-mail Adress

info@bemaxmetal.com.tr  
satis@bemaxmetal.com.tr

### Phone Number

(0312)8020678  
(0312)8020679

